

Item
Model
ProjectName



T5M

T5-M is a practical solution for the cleaning of shellfish and mussels in professional catering kitchens. Main feature: removable peeling chamber and peeling plate. The peeling chamber fits easily onto the base, with the drive shaft fitting into the centre of the plate.

User advantages:

- possibility of loading the tank away from the peeling area
- easily cleanable
- suitable speed for shellfish cleaning

FEATURES

- Rotation speed, while preserving the mussels quality, allows the cleaning of 5kg. of shellfish in 2 minutes.
- Seashells can be loaded directly into the peeling chamber, away from the machine.
- Unloading of the machine simply by removing the peeling chamber with its content of cleaned mussels.

- Maximum cleaning assured: the parts in contact with the mussels are easily reachable while the cells are removable and suitable for hand and machine cleaning.
- This peeler stands out among all traditional models thanks to these advantages. T5-M meets all the requirements for ergonomics and hygiene in modern professional catering kitchens.



DITO**Electrolux**

- Stainless steel peeling chamber contains the abrasive plate, which also serves as a container for carrying the vegetables. This assembly fits easily onto the base, with the drive shaft fitting into the centre of the plate.
- Cover equipped with a water inlet closes the cylinder during the peeling operations.
- Integrated filter device.

Specifications

MODEL	T5MFB 601305
External dimensions - mm	
width	424
depth	390
height	590
RPM	208
Power - kW	
installed-electric	0.12
Net weight - kg.	18.2
Supply voltage	220...240 V, 1N, 50

Included accessories

CODE	DESCRIPTION	
653514	FILTER BASKET-8KG PEELER+SHELL PEELERS	1
653486	SEASHELL PLATE FOR 5/8KG VEGETAB.PEELERS	1

Optional accessories

CODE	DESCRIPTION	
653515	CONVERT T5M TO T5E-ABR.CYLIND+ABR.PLATE	✓
653514	FILTER BASKET-8KG PEELER+SHELL PEELERS	✓
653496	S/S TABLE FOR 5/8KG VEGETABLE PEELERS	✓
653486	SEASHELL PLATE FOR 5/8KG VEGETAB.PEELERS	✓

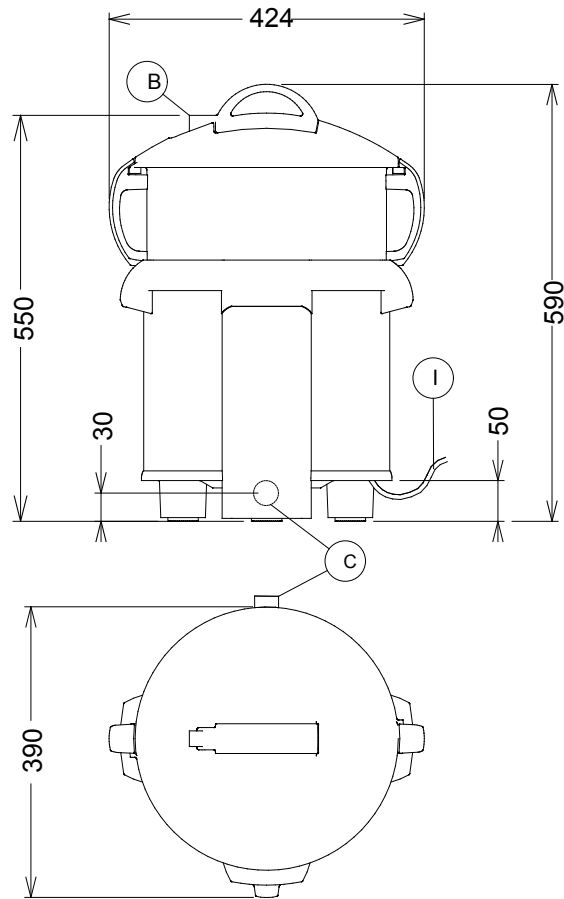


DITO

Electrolux

Installation drawings

601305



MODEL

**T5MFB
601305**

B - Cold water inlet

3/4"

C - Water drain

1" 1/4

I - Electrical connection

220...240 V, 1N, 50



Peelers

The manufacturer reserves the right to modify and make improvements to the products without giving prior warning. Dimensions, illustrations, technical data, weights, etc. are given as an indication only.



www.dito-electrolux.com

